

# ***MOBIFRAME***

*Devices for comfort and safety*

## **The Official UK Leisure Distributor**



**01608 661717**

**CAMPER  
WAREHOUSE**



**Monday - Friday  
8AM - 5PM**



**[sales@camperwarehouse.co.uk](mailto:sales@camperwarehouse.co.uk)**



**[camperwarehouse.co.uk](http://camperwarehouse.co.uk)**



**Plantagenet Trading Estate,  
Kineton, Warwickshire, CV35 0HU**



*photo: Globe Traveller RV*

Welcome to Mobiframe

Mobiframe is a manufacturer of high-quality equipment for camper conversions. All products offered by Mobiframe are entirely manufactured in our company. They are designed by our engineering department and tested in our laboratory. We offer camper conversion components such as bed benches and frames, single seats with bases, passenger and driver swivels, aluminum beds, partition walls and composite flooring solutions.

Regardless if the motorhome of your dreams is a weekender based on smaller vans like Volkswagen T6 or bigger vehicles such as Fiat Ducato or Mercedes Sprinter – Mobiframe has accessories compatible with all popular vans available on the market. Mobiframe products have all necessary certificates in accordance with to ECE requirements.

We design ourselves In the designing process of MOBIFRAME's products, we effectively use modern techniques and engineering tools such as rich set of CAD / CAM software, MES numerical calculation systems, 3D scanning and 3D printing. A well-equipped prototyping department provides designers the opportunity to experiment on real objects. For vehicle manufacturers – we offer the possibility of adapting MOBIFRAME's products to their vehicles, developing new products according to their guidelines and cooperation with assistance in the area of approvals and tests.

We produce ourselves The production department of the Mobiframe company is equipped with modern and extensive machine park. We have the necessary manufacturing technologies that make us independent of subcontractors. Also, we are able to quickly produce what we have designed.

Safety above all The Mobiframe's laboratory is equipped with devices for testing vehicle bodies in the scope of passive safety. We are able to verify static and dynamic strength, as well as crashworthiness of structures. All Mobiframe products are tested and have the necessary certification according to the requirements of national, European, and American regulations.

# SAF 42

## CAMPER BED-BENCHES

Mobiframe SAF42 3-panel two seater seatbed with Isofix anchorages and 3-point seat belts. Easy and intuitive to use. Comfortable both in seat and bed position.

Our premium quality seatbed can be installed in a vehicle outfitted with our one-piece composite floor. The seatbed can be assembled with our sliding system, which allows movement and locks it in any position along the floor. SAF42 available in widths of 86 cm, 97 cm, 112 cm. Other ways of installation are also available.

Product fully tested according to the ECE requirements for M1 and N1 vehicles.



# SAF 43

## CAMPER BED-BENCHES

**MOBIFRAME**

Mobiframe SAF43 is a 3-panel three seater seatbed with Isofix anchorages and 3-point seat belts. Easy and intuitive to use. Comfortable both in seat and bed position.

Our premium quality seatbed can be installed in a vehicle outfitted with our one-piece composite floor. The seatbed can be assembled with our sliding system, which allows movement and locks it in any position along the floor. SAF43 available in widths 118 cm, 126 cm, 144 cm and 150 cm. Other ways of installation are also available.

Product fully tested according to the ECE requirements for M1 and N1 vehicles.



# SAF 42/43

## FEATURES

### FEATURES:

- Best sliding system available on the market. Sliding base option provides flexibility in adjusting the seat position. Many location possibilities in the vehicle
- ISOFIX and Top Tether anchorages. By using ISOFIX, we enhance the safety and convenience for parents, ensuring that their child seats are correctly and securely installed every time.
- Available with both sliding bases and fixed mounts. Both variants come in different heights, allowing for customized fitting and avoiding conflict with wheel arch box.
- Large sleeping area – 192cm. Product is crafted with high-quality materials and ergonomic design, our bench ensure both durability and comfort, making them an ideal choice for your travel adventures.





### FEATURES:

- Contoured seat and backrest cushions. The carefully shaped foams ensures a pleasant seating experience, adapting to the natural curves of your body. This attention to detail provides enhanced relaxation, making our benches an ideal solution to your camper van.
- 3 point seat belts integrated in the backrest, ensuring maximum safety for passengers.
- Travel organizers. Easily removable travel bags provide storage solutions, keeping your space tidy and efficient.
- Large space under seat cushion. Additional features - a drawer or a cooler in space between base legs, offering versatile options to suit your needs.
- Fully tested according to the ECE requirements for M1 and N1 vehicles.



# COMPOSITE FLOOR

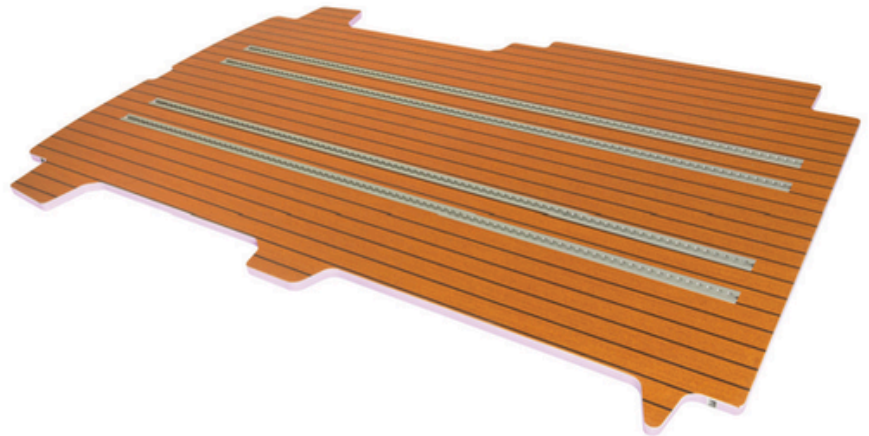
## FLOORING SYSTEM

Mobiframe is the producer of the lightest composite floor system available on the market.

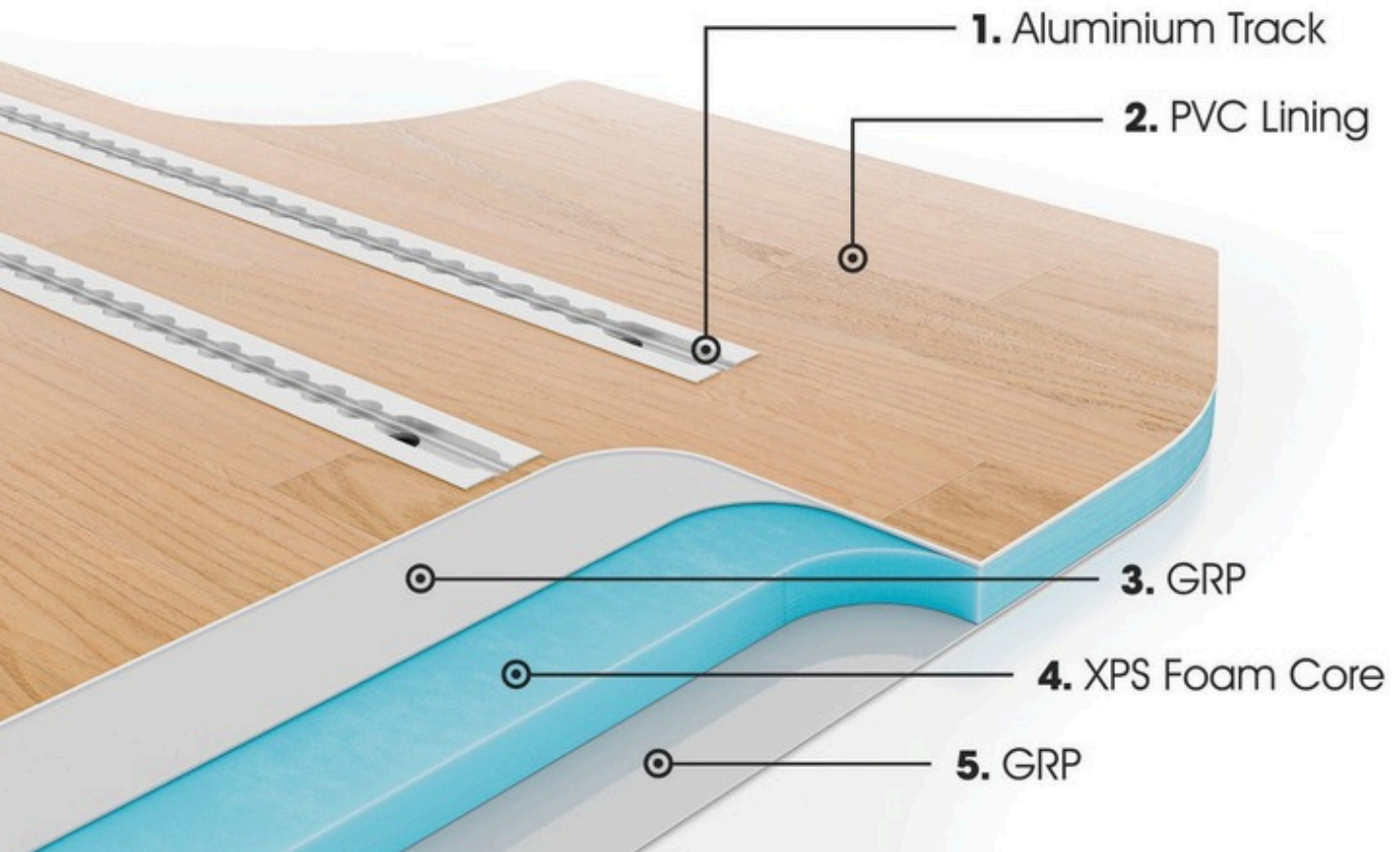
The floor is a sandwich structure with foam as a core, resulting in excellent insulation characteristics. We can offer two variants of installation: glued or bolted. We supply our floors cut to vehicle's shape and already glued high-quality PVC. A wide range of lining is available.

### FEATURES:

- Fully tested according to ECE requirements for M1 and N1 vehicles.
- The lightest composite floor available on market.
- High level of vibration and sound proofing.
- Thermal insulation by foam core.
- Provided with already glued PVC or other lining.
- Available with the option of underfloor heating.
- Any number and arrangement of aluminum tracks possible.
- Compatible with all vehicle types.
- Quick installation time - approximately 20-30 minutes.
- Compatible with Mobiframe seats and beds sliding system.







# TAXI AND COMFORT SEAT

## SINGLE SEAT

Single seats for use in all kind of M1 and N1 vehicles. Comfortable and lightweight with ISOFIX anchorages and 3- point seat belts, equipped with two comfortable armrests. Large offer of upholsteries and trimming patterns are available. Easily installed on the Mobiframe one piece composite floors.

### FEATURES:

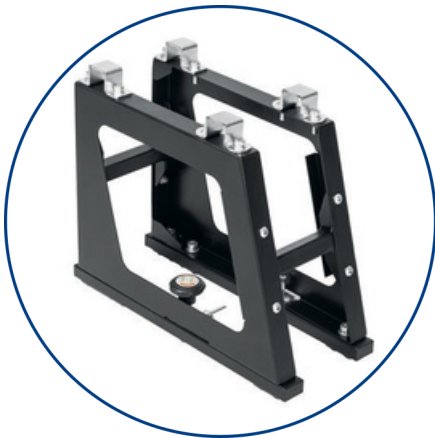
- ISOFIX and Top Tether anchorages. By using ISOFIX, we enhance the safety and convenience for parents, ensuring that their child seats are correctly and securely installed every time.
- Quick lock anchorage system allow to easily install and remove the seats in many locations in the vehicle.
- 360° revolving base - upgrade the seat with a 360-degree swivel base, enabling to rotate the seat freely.
- Folding backrest - backrest option that allows the seat to be adjusted to a flat position. This feature enable to transform the seat into a comfortable sleeping area when needed.



**TAXI**



**COMFORT**



# SINGLE SWIVELS

---

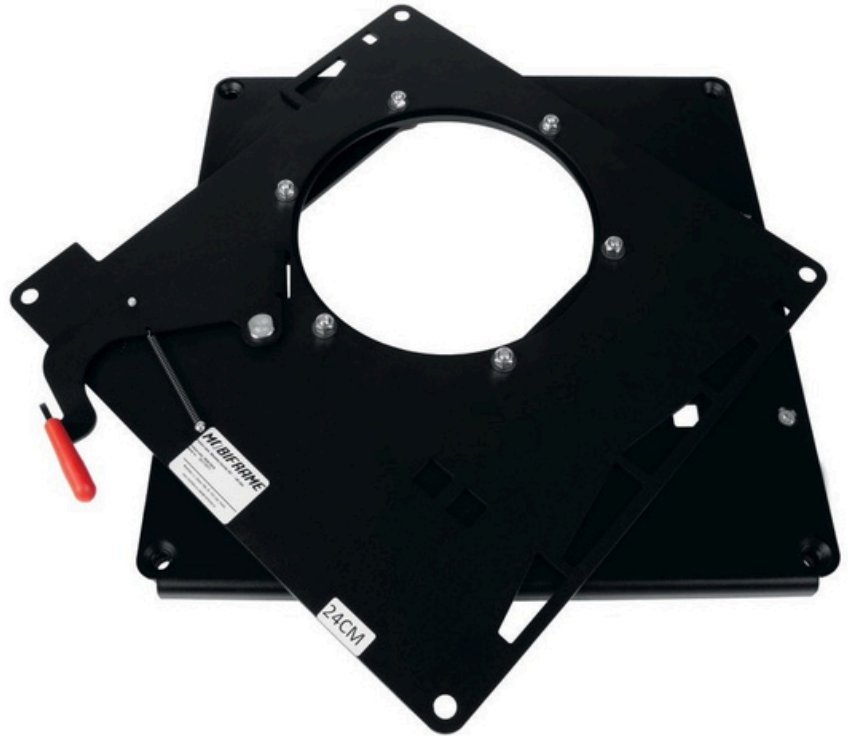
Our passenger and driver seat swivels. Lightweight construction made with high strength steel provides high level of stiffness and durability. They allow to rotate the OEM seats smoothly, enhancing the comfort of each camper van.

## FEATURES:

- Tested according to ECE requirements for M1 and N1 vehicles.

## OPTIONAL:

- Handbrake kit with cover enable OEM seat to rotate without interference from the handbrake or other vehicle components. This thoughtful design ensures a seamless and convenient experience, making any travel more enjoyable.



# DOUBLE SWIVELS

---

**MOBIFRAME**

Mobiframe double swivel bases for passenger double seats provides high stiffness and durability. These swivel bases allow to rotate the double passenger seat seamlessly, providing greater flexibility and convenience. Additionally product ensure that three seating places are maintained in the driver's cabin, enhancing both functionality and transform any van living space without losing all the benefits of the bench seat up front.

## FEATURES:

- Tested according to the ECE requirements for M1 and N1 vehicles.
- 360° rotating system.
- Compatible with OEM double seats.





# RAM 03

## CAMPER BENCHES

This is a second-row bench for various types of RV vehicles. The individual adjustable seats are installed on guides that provide both lateral and longitudinal adjustment for greater comfort when travelling. The seat belts are integrated into the backrests. Supplied with one of two types of installation systems - underfloor reinforcements or an installation plate glued to the floor. The product is fully tested according to ECE requirements for M1 and N1 vehicles.



**FEATURES:**

- Fully tested according to ECE requirements for M1 and N1 vehicles.
- Two seater bench with comfortable single seats.
- 3 point intergrated seat belts.
- Lateral adjustment to allow for an additional 110 mm space when travelling.
- Longitudinal adjustment and reclining backrest for greater passenger comfort.
- Two part frame with underneath storage space.

**OPTIONAL:**

- ISOFIX and TOP TETHER anchorages.
- Heated seats.
- Aisle seat upholstered armrest.
- Higher base for double floor.



# SAF 04T

## BENCH FRAMES

Lightweight two seater bench frame.  
There are many options to configure  
this product, based on customer needs.

### FEATURES:

- Lightweight construction made from a high-strength steel.
- Tested according to the ECE requirements for M1 and N1 vehicles.
- 3 point seat belts.
- ISOFIX with TOP TETHER anchorages.
- Cost-effective packaging and transportation.
- Easy assembling and installation in the vehicle.

### OPTIONAL:

- Adjustable headrests and backrest frames.
- Set of upholstered cushions.
- Height extension kit- for a double floor.



## SAF 07

### BENCH FRAMES

**MOBIFRAME**

Lightweight two-passenger seatbelt structure with 3-point seat belts, adjustable headrests and ISOFIX anchorages.

Easy installation in various positions in the vehicle by using a special installation steel plate (sold separately) or by special underfloor brackets.

#### FEATURES:

- Lightweight construction made from a high-strength steel.
- Tested according to the ECE requirements for M1 and N1 vehicles.
- 3 point seat belts
- ISOFIX with TOP TETHER anchorages
- Suitable for many vehicles types

#### OPTIONAL:

- Adjustable headrests
- Height extension kit for an additional 120 mm in height.









# ELECTRICALLY LIFTED BED

## CAMPER BEDS

**MOBIFRAME**

At Mobiframe, we offer aluminium beds for camper vans that are both durable and versatile. Our beds can be electrically elevated by 2 electric actuators with remote control to provide additional space. Designed with precision and quality to the specific needs of our partners, these beds ensure comfort and functionality, making them an ideal choice for camper van setup. Whether for sleeping or storage, our aluminium beds provide a smart and reliable solution for enhancing any camping experience.

### FEATURES:

- Lightweight aluminium structure.
- Remote control.
- Customisable dimensions.



# FURNITURE

## CAMPER FURNITURE

Furniture is crucial to our satisfaction from our RV. It should be aesthetic and functional but also lightweight (it is essential considering the overall weight of the vehicle), easy to assemble and compatible with other elements of the equipment. Mobiframe furniture is distinguished by its extremely low weight (even 4.5 kg per 1 m<sup>2</sup>), which is possible thanks to the use of foam core inside the walls. We do the projects for various RVs.

The delivered product is optimised in terms of packaging, which significantly reduces the cost of transport. Importantly, the furniture is compatible with Mobiframe flooring systems – at the customer's request, assembly points will be prepared both in the furniture and in the floor.



### FEATURES:

- The furniture is available in a light version with plywood core (7 kg/m<sup>2</sup>) and a super light version with foam core (4,5 kg/m<sup>2</sup>).
- The product is ready for easy and quick installation in the vehicle.
- Compatible with Mobiframe composite floor systems.
- Product designed for individual orders.
- Optimised packaging system which reduces the cost of transport – the product is delivered in a box with assembly instructions.
- Many colours of veneer available.



# PARTITION WALL

---

Lightweight partition wall system, cut to size and ready for installation.

Mobiframe lightweight partition wall system available for different applications.

## FEATURES:

- Fully tested according to ECE requirements.
- Lightweight composite partition wall.
- Compatible for all vehicles types.
- Customisable for customer needs.
- Product comes ready for installation.

## OPTIONAL:

- Wall type with sliding door, suitable for courier vans.
- Wall type with fixation points for seats or medical equipment.
- Wall type with window suitable for passenger vehicles.



# ALUMINIUM TRACKS

---

**MOBIFRAME**

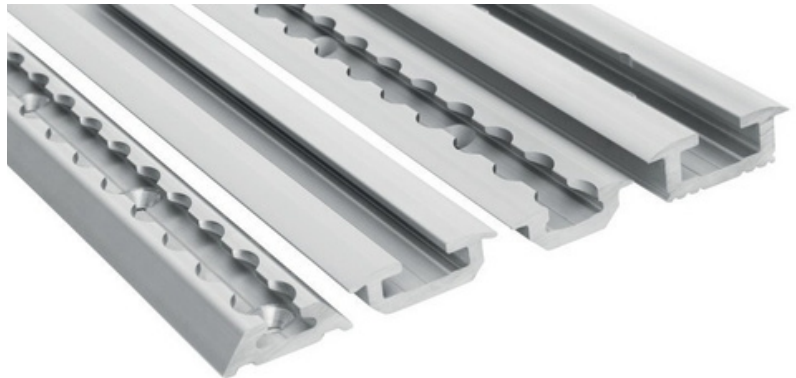
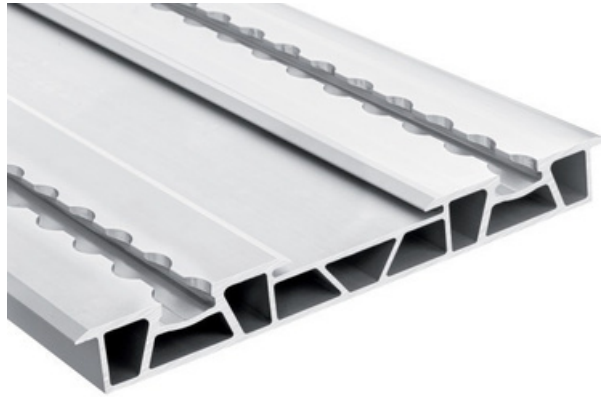
Mobiframe is a producer of aluminium tracks for installation seats, cargo or different type of equipment in vehicles.

## FEATURES:

- Suitable and tested with various types of seats.
- Fully tested according to ECE requirements for M1 and N1 vehicles.
- Compatible with Quick – Locking systems.
- Cutted to requested length.

## OPTIONAL:

- Installation glues.
- Protective rubbers.
- T-Bolt and Sliders for installation of equipment and seats.
- Quick – Locking system for installation seats.





# SLIDING TABLE

ACCESORIES BY

**VANEQUIPPED**

A Vanequipped lightweight floor-mounted table with foldable tops is a versatile and practical addition to passenger space in any van. It features document pockets, and three cup holders, making it perfect for enhancing convenience and organization. The locking and sliding system allows the table to move along the entire length of the rail, providing flexibility in positioning. Installation of the table requires the Mobiframe composite floor, equipped with rails that enable to customize the passenger area according to specific needs. Product available with different colours of tops.



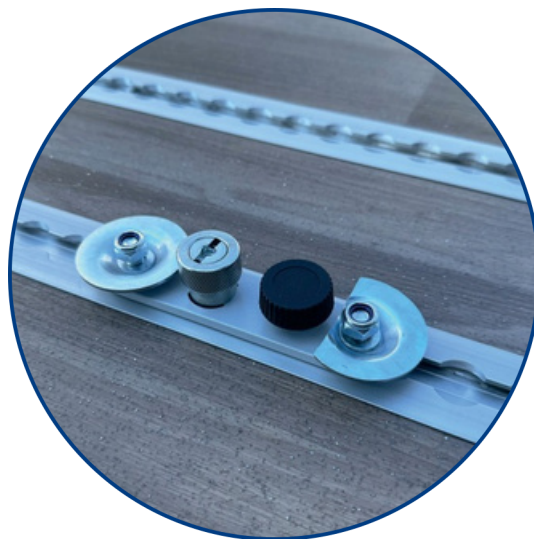
# FIXATION KIT

ACCESSORIES BY

**VANEQUIPPED**

**MOBIFRAME**

A Vanequipped universal fixation kit is a versatile mechanism designed for the swift and easy removal and installation of furniture, equipment, or other types of vehicle fixtures. It is user-friendly and ensures a smooth operation, making it an ideal solution for those who require frequent reconfiguration of their vehicle's interior. This quick lock connector enhances flexibility and efficiency, providing a reliable and convenient way to adapt space to your changing needs. It is a smart connector that has many interesting applications.



# BIKE FITTINGS

ACCESSORIES BY

**VANEQUIPPED**

Vanequipped bicycle fitting kits are designed for easy and quick installation in aluminium rails. Fittings are compatible with Mobiframe composite floors and rails as well. These fittings ensure a secure and stable hold for all bicycles, making transportation safe and convenient. User-friendly design, our bicycle fitting kits allow to swiftly attach and detach bikes, enhancing the flexibility and functionality of any vehicle's interior. We offer various types of bicycle fitting kits, including frame, fork, and wheel types. Ideal for both recreational and performance bicycles, our mounts provide a reliable solution for all biking adventures.





photo: Affinity RV





***MOBIFRAME***

---

**Contact us:**

**[sales@camperwarehouse.co.uk](mailto:sales@camperwarehouse.co.uk)**

**01608661717**

**[camperwarehouse.co.uk/mobiframe-uk](https://camperwarehouse.co.uk/mobiframe-uk)**

**Plantagenet Trading Estate, Warwick  
Road, Kineton, Warwickshire, CV35 0HU**